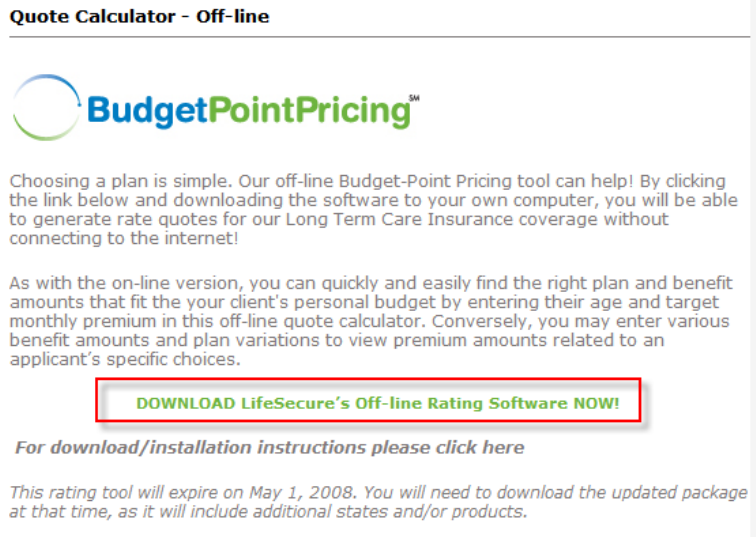


OFF-LINE LTC QUOTE CALCULATOR: INSTALLATION PROCEDURE

Please follow these steps to download LifeSecure's Off-line Quote Calculator for LTC individual and multi-life rates. If you have any issues or questions during installation that this document does not address, please contact your Agent Support Care line at 866.582.7701.

1. Go to LifeSecure's Agent Portal at www.YourLifeSecure.com and log in with your username and password
2. Click on "Quote Calculator", then "Quote Calculator - Off-line (LTC)"
3. Click on link in green, "Download LifeSecure's Off- line Rating software NOW!"



Quote Calculator - Off-line



Choosing a plan is simple. Our off-line Budget-Point Pricing tool can help! By clicking the link below and downloading the software to your own computer, you will be able to generate rate quotes for our Long Term Care Insurance coverage without connecting to the internet!

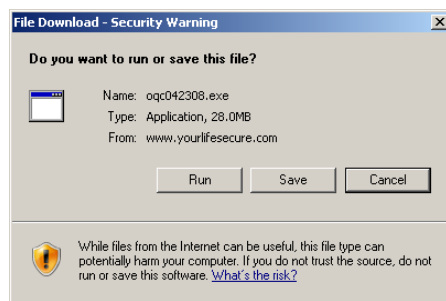
As with the on-line version, you can quickly and easily find the right plan and benefit amounts that fit the your client's personal budget by entering their age and target monthly premium in this off-line quote calculator. Conversely, you may enter various benefit amounts and plan variations to view premium amounts related to an applicant's specific choices.

DOWNLOAD LifeSecure's Off-line Rating Software NOW!

For download/installation instructions please click here

This rating tool will expire on May 1, 2008. You will need to download the updated package at that time, as it will include additional states and/or products.

2. Within the "File Download" dialog box (shown below), choose one of the following installation methods:



- a. If you would like to install the software **now**:
 - Click "Run"

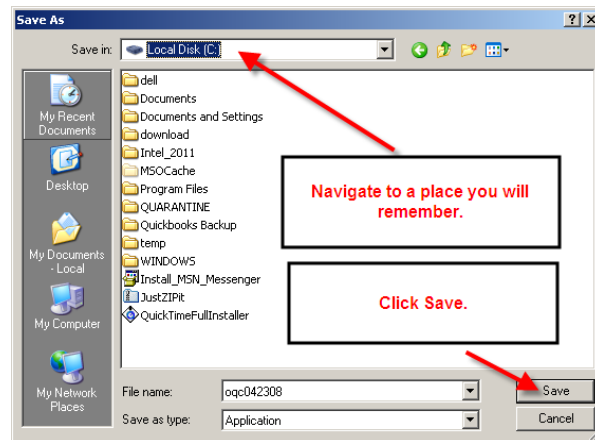
- **Note:** This may take several minutes depending on your internet connection. You may or may not have a progress window visible during the download. The software is being downloaded, so please do not attempt to start the download process again.
- If an Internet Explorer Security Warning pops up, click “Run.”



- Continue to Step 3.

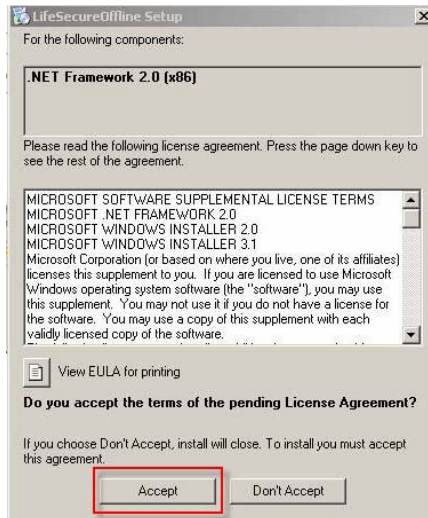
b. If you would like to install the software **later**:

- Click “Save”
- Browse to a location on your computer where you would like to save the file and click “Save”

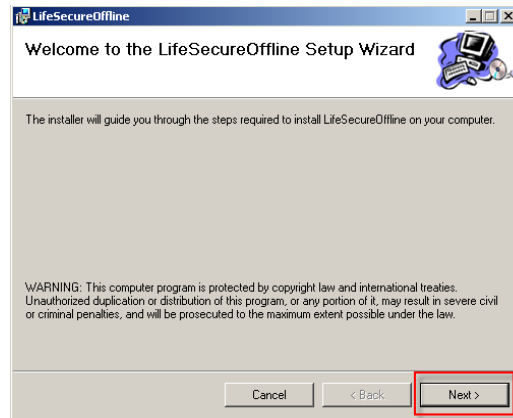


- **Note:** This may take several minutes depending on your internet connection. You may or may not have a progress window visible during the download. The software is being downloaded, so please do not attempt to start the download process again.
- Once you have saved the file and you are ready to install, double-click the zip file to begin installation.
- Continue to Step 3.

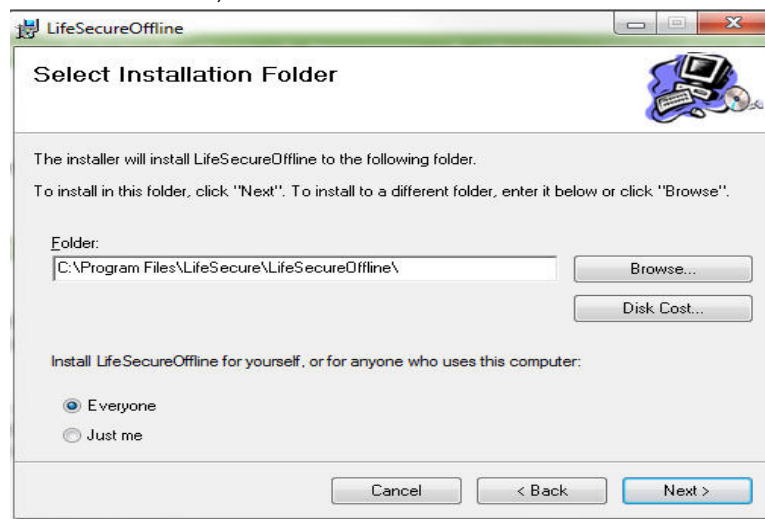
3. If the “LifeSecure Offline Setup” box appears, click “Accept” to install the .NET 2.0 dialog box. If not, go to step 4.



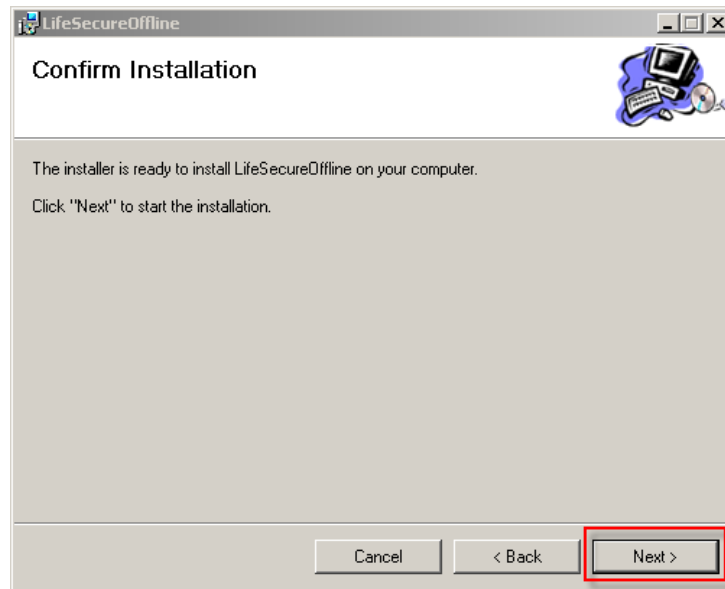
4. On the “Welcome to the LifeSecure Offline Setup Wizard” screen, click “Next.”



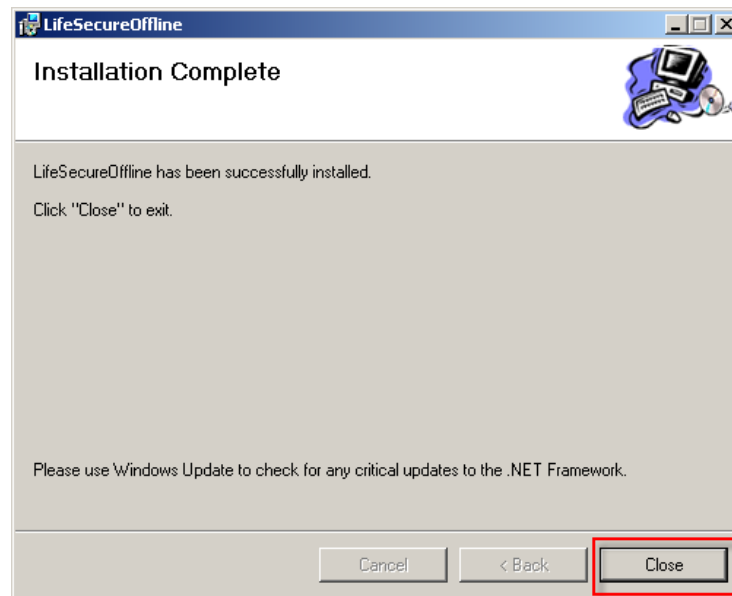
5. On the “Select Installation Folder” screen, you may select a desired location to install the Off-line Quote Calculator. If you are unsure which folder you want to install, or would like to install in the default location, click “Next.”



6. On the “Confirm Installation” screen, click “Next” to start the installation.



7. Once the installation finishes, click “Close.”



8. A shortcut to the Off-line Quote Calculator will be placed on your desktop for you to run LTC individual and multi-life rates, even when not connected to the internet.

